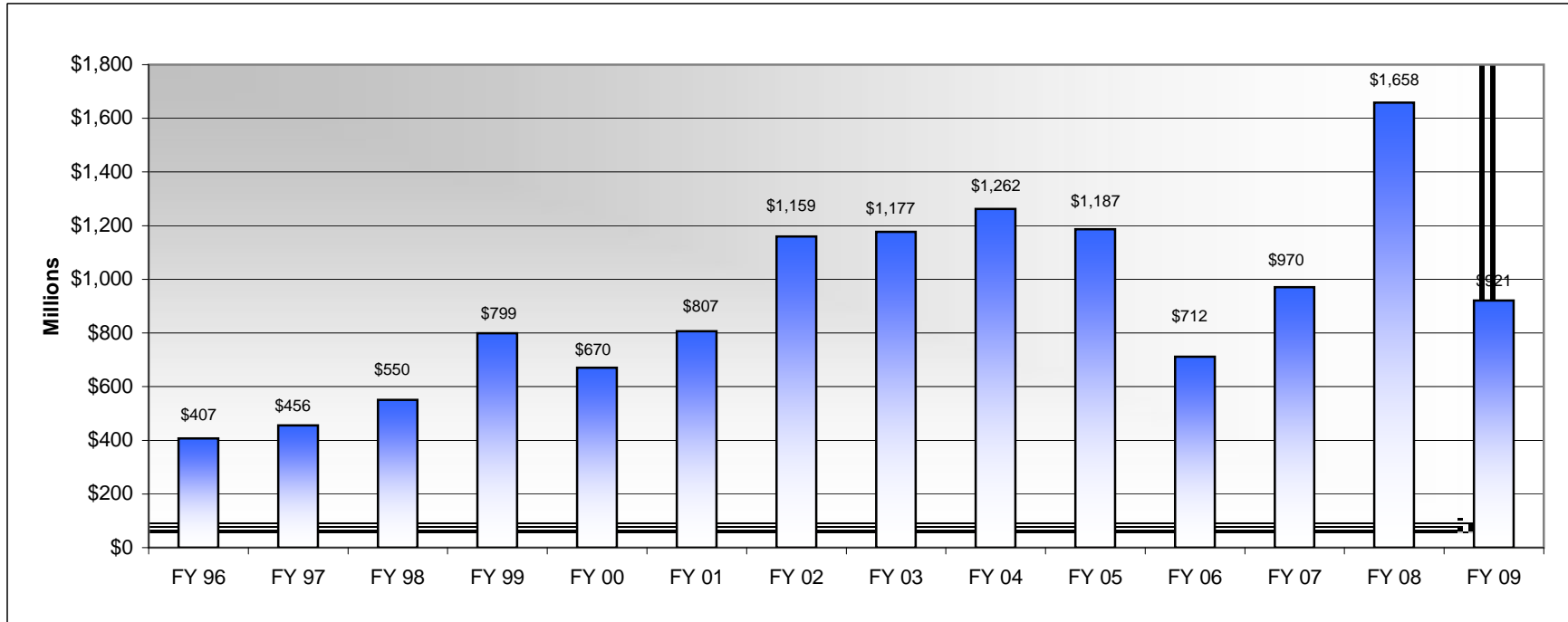
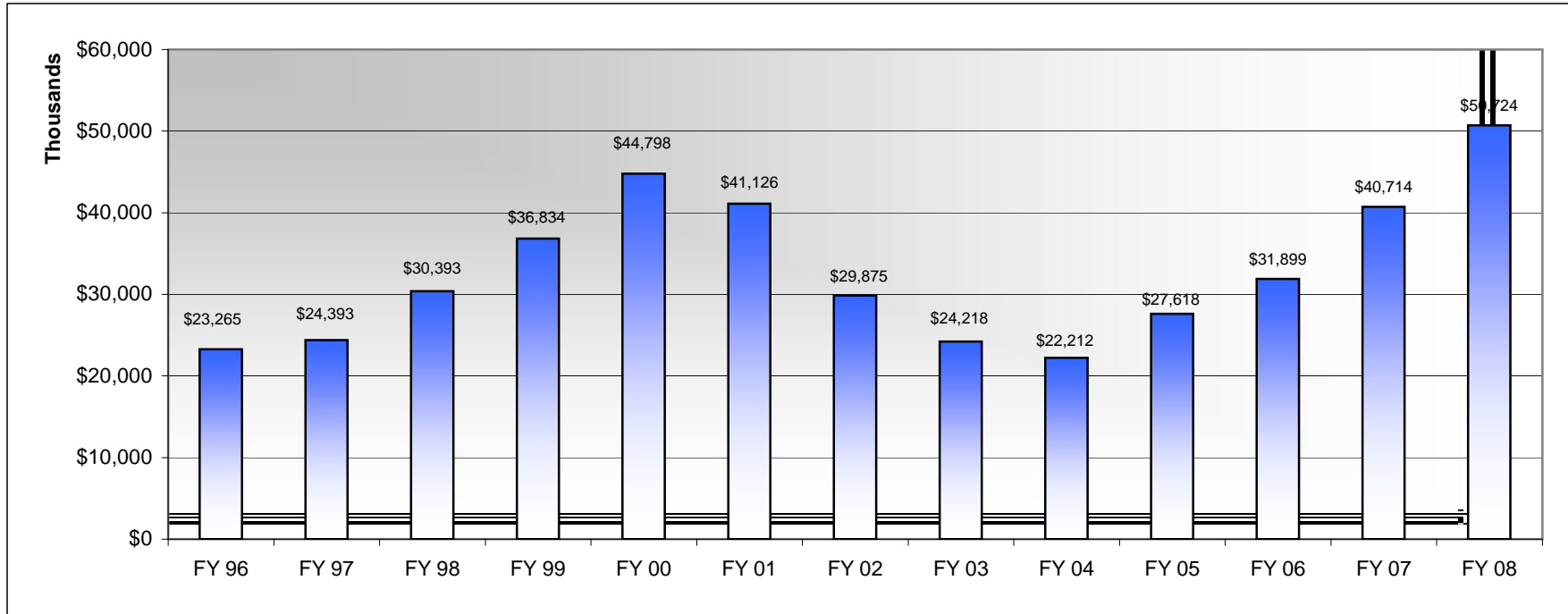


New Mexico State Treasurer's Office  
Local Government Investment Pool  
Fiscal Year End Market Value Balances

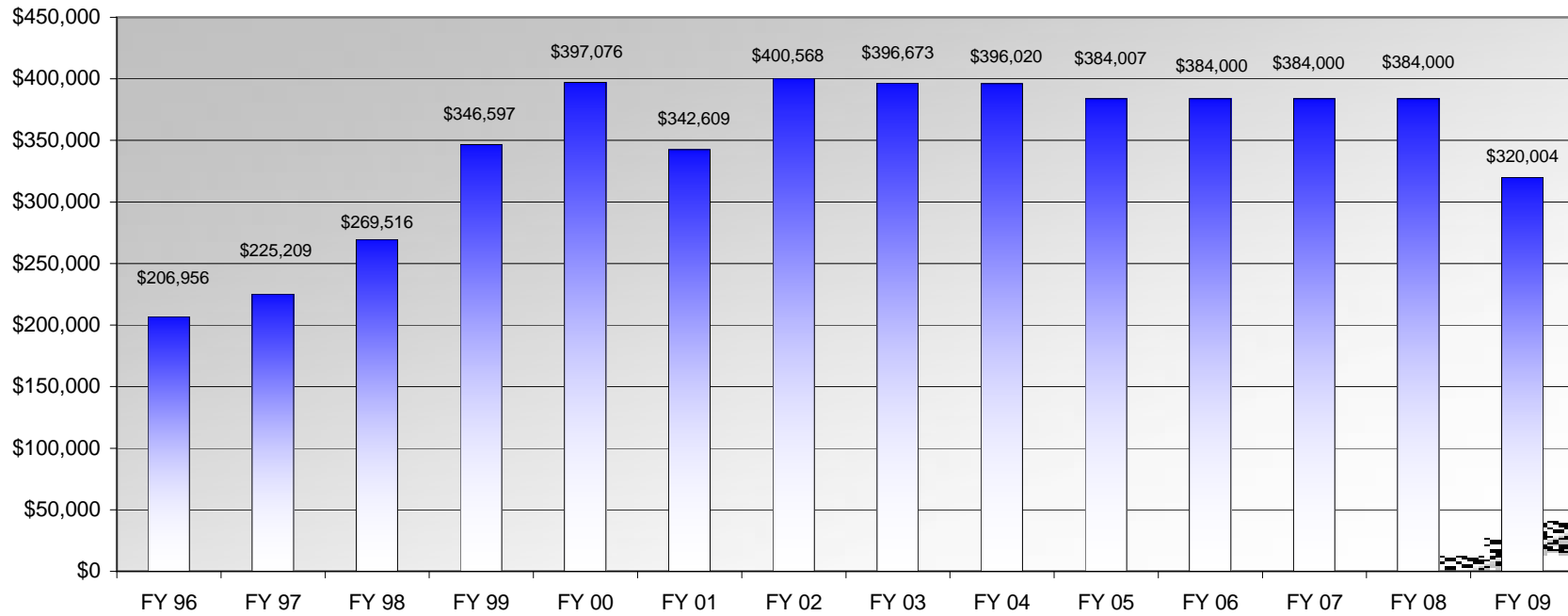


New Mexico State Treasurer's Office  
Local Government Investment Pool  
Interest Earned by Fiscal Year

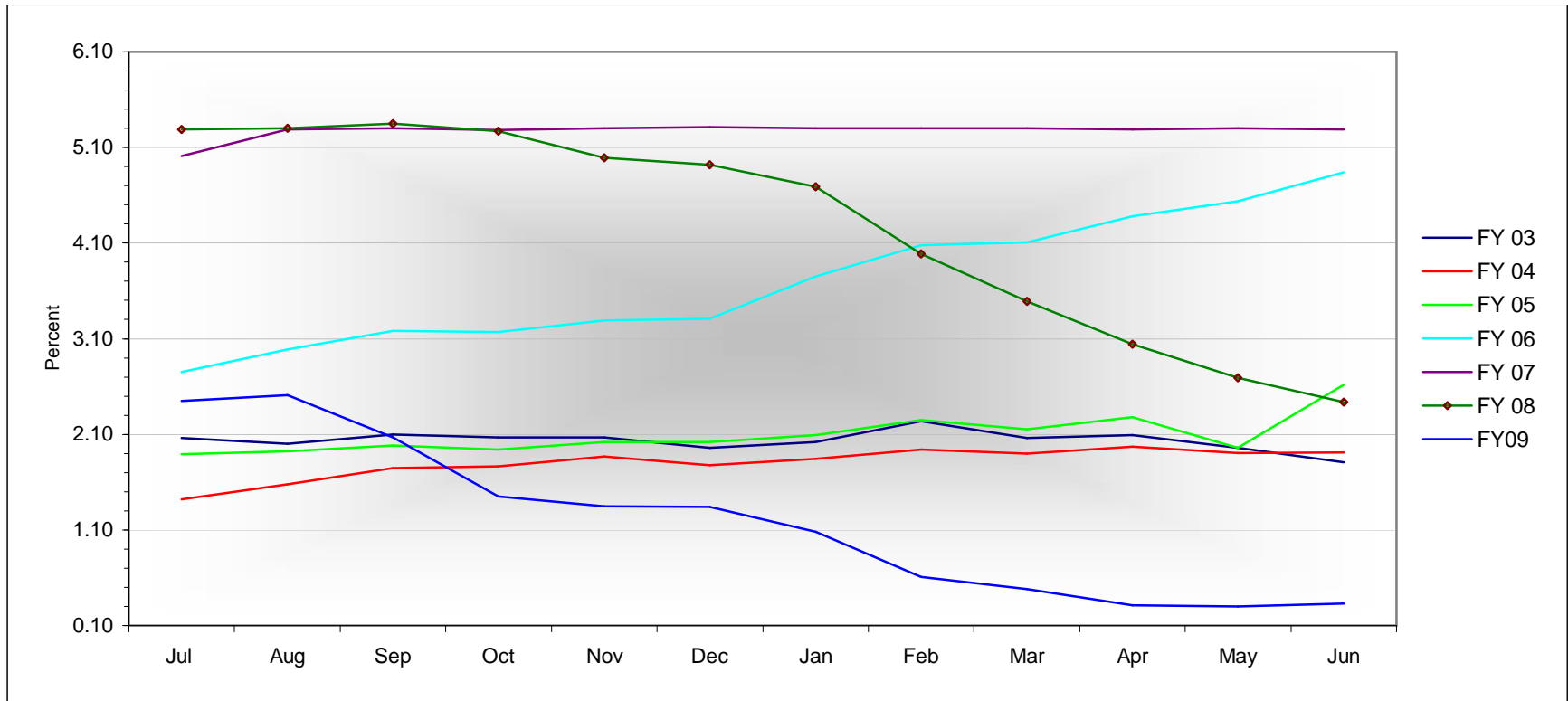


13 yr total: \$428,068,035

New Mexico State Treasurer's Office  
Local Government Investment Pool  
Administration Fees by Fiscal Year

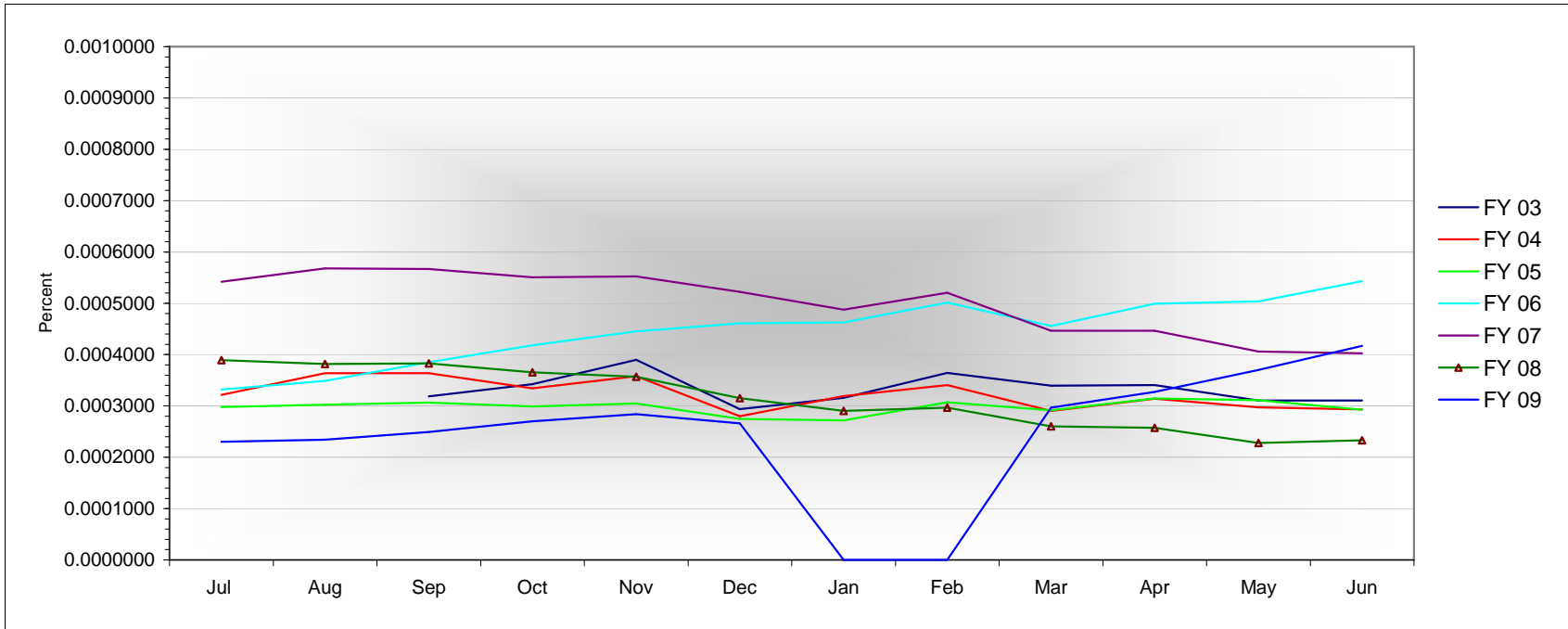


New Mexico State Treasurer's Office  
 Local Government Investment Pool  
 Gross Yield by Fiscal Year



	FY 03	FY 04	FY 05	FY 06	FY 07	FY 08	FY 09
Jul	2.06	1.42	1.89	2.75	5.01	5.29	2.45
Aug	2.00	1.58	1.92	2.99	5.29	5.30	2.51
Sep	2.10	1.75	1.98	3.18	5.30	5.35	2.07
Oct	2.07	1.76	1.94	3.17	5.28	5.27	1.45
Nov	2.07	1.87	2.02	3.29	5.30	4.99	1.35
Dec	1.96	1.78	2.02	3.31	5.31	4.92	1.34
Jan	2.02	1.84	2.09	3.75	5.30	4.69	1.08
Feb	2.24	1.94	2.25	4.08	5.30	3.99	0.61
Mar	2.06	1.90	2.15	4.11	5.30	3.49	0.48
Apr	2.09	1.97	2.28	4.38	5.29	3.04	0.31
May	1.96	1.90	1.96	4.54	5.30	2.69	0.30
Jun	1.81	1.91	2.62	4.84	5.29	2.44	0.33

## Local Government Investment Pool Administrative Fee - Basis Points Assessed



	FY 03	FY 04	FY 05	FY 06	FY 07	FY 08	FY 09	FY10	FY11
Jul		0.0003216	0.0002979	0.000332	0.000542	0.000389	0.000230		
Aug			0.0003636	0.0003024	0.000349	0.000568	0.000382	0.000234	
Sep	0.0003187	0.0003636	0.0003068	0.000385	0.000567	0.000383	0.000249		
Oct	0.0003423	0.0003341	0.0002988	0.000418	0.000550	0.000366	0.000270		
Nov	0.0003897	0.0003579	0.0003050	0.000446	0.000553	0.000357	0.000284		
Dec	0.0002940	0.0002797	0.0002745	0.000461	0.000522	0.000315	0.000266		
Jan	0.0003156	0.0003191	0.0002721	0.000463	0.000488	0.000290	0.000000		
Feb	0.0003641	0.0003408	0.0003069	0.000501	0.000521	0.000297	0.000000		
Mar	0.0003394	0.0002904	0.0002915	0.000456	0.000446	0.000260	0.000297		
Apr	0.0003408	0.0003138	0.0003148	0.000499	0.000447	0.000257	0.000327		
May	0.0003107	0.0002971	0.0003111	0.000504	0.000406	0.000228	0.000370		
Jun	0.0003107	0.0002932	0.0002924	0.000543	0.000403	0.000233	0.000417		